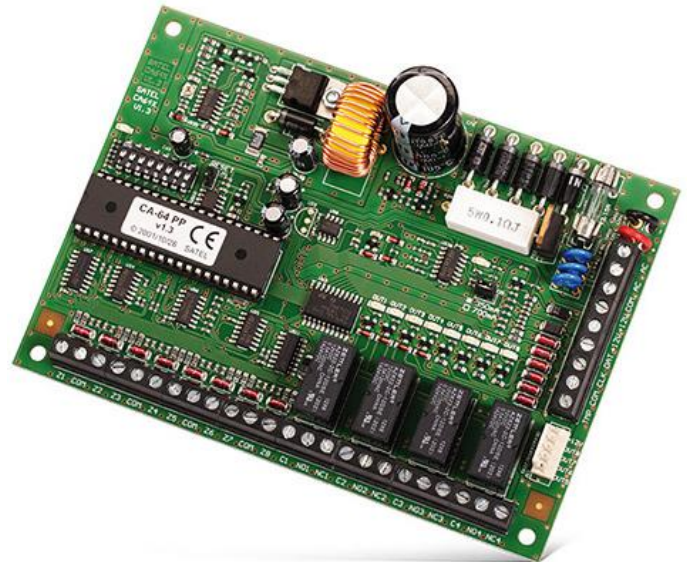


CA-64 PP

SUBPANEL MODULE

This subpanel module is aimed at **INTEGRA** control panels and makes it possible to extend them with 8 additional inputs operating the NO, NC, EOL and 2EOL configurations as well as 8 programmable relay outputs and OC outputs. The additional anti-sabotage input facilitates detection of unauthorised opening of the enclosure in which the module is fitted. The **CA-64 PP** module is equipped with a back-up power supply (capacity 2.2 A) ensuring additional power to supply alarm system elements.

- system expansion with 8 zones
- system expansion with 8 outputs
 - (4 relay/4 low current OC)
- switching mode power supply



TECHNICAL DATA

Environmental class	II
OC outputs rating	50 / 12 V DC mA
Power supply rating	2,2 A
Board dimensions	142 x 102 mm
Operating temperature range	-10...+55 °C
Weight	190 g
Relay contacts rated load (resistive)	2 A / 24 V DC
Maximum humidity	93 ±3%
Recommended transformer type	TR40VA (40 VA / 18 V AC)
Output voltage range	9,5...13,8 V DC
Battery failure voltage threshold (±10%)	11 V
Battery cut-off voltage (±10%)	9,5 V
Battery charging current (switch-over)	400 / 800 mA
Current consumption (w/o OC type output load and w/o active relays)	34 mA
Current consumption by active relay	20 mA
Supply voltage (±10%)	18 V AC, 50-60 Hz