

# PERFECTA 16

The **PERFECTA** family control panels are designed to protect small and medium-sized premises, such as apartments, detached houses, segments of terraced houses, offices, small businesses, etc. They provide protection to the requirements of EN 50131 Grade 2.

The system based on the **PERFECTA 16** control panel is characterized by quick installation, simple configuration as well as easy and intuitive operation. In addition to the basic, traditional control, the control panel also offers more modern methods: by using the functional and intuitive **PERFECTA CONTROL** application for mobile devices or remote control keyfobs operating in the 433 MHz frequency band (after connecting the **INT-RX-S** module).

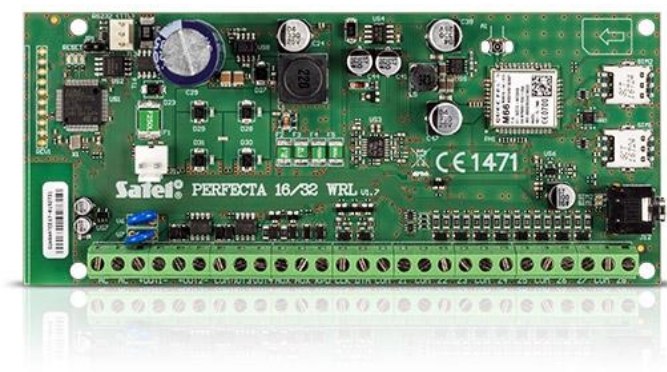
The built-in GSM/GPRS module provides a wide range of features: interaction with mobile application with support for PUSH messages, remote configuration using the **PERFECTA Soft** program, reporting events (e.g. to the monitoring station security agency), voice messaging, control via SMS and audio verification (listening in to the sounds from the protected premises). Two nano-SIM cards are supported to ensure continuity of communication: if any problems occur with the first operator range, the second card is automatically selected.

The control panel electronics board is provided with wired 8 zones and 4 outputs. Their number can be increased by connecting the extension modules: **INT-E** zone expander and **INT-O** or **INT-ORS** output expanders. This allows you to expand the system by adding more detectors, sirens, and even actuators (to control the garage door, roller shutters, garden sprinklers).

The control panel enables the object (premises) to be divided into two partitions, with three armed modes to select from (day, night, full). Each zone can be assigned to one or both of the supervised areas.

The system can be configured in two ways: using the intuitive **PERFECTA Soft** program (from a computer connected with RS-232 (TTL) cable or remotely) and from a keypad, using shortcuts in the service menu.

- compliance with **EN 50131 Grade 2**
- from 8 to 16 programmable wired zones:
  - selectable configuration: NO, NC, EOL, 2EOL/NO, 2EOL/NC
  - support for roller shutter detectors / vibration detectors
- from 4 to 12 programmable wired outputs
- 2 power outputs on mainboard
- built-in modules:
  - GSM/GPRS with 2 SIM slots (SMS, reporting to monitoring station, mobile application, PUSH notifications)
  - voice (playback of voice messages for telephone messaging purposes)
  - audio alarm verification (listening in)
- system division into 2 partitions:
  - 3 detection modes in each partition
  - optional assignment of each zone to two partitions
  - user control or timer control option
- communication bus for connecting keypads (**PRF-LCD**), expansion modules (**INT-E**, **INT-O**, **INT-ORS**) and 433 MHz keyfob receiver expansion module (**INT-RX-S**)
- system control by using:
  - PRF-LCD keypads (up to 4)
  - PERFECTA CONTROL mobile application
  - remote control keyfobs operating in the 433 MHz band (up to 15) – requires cooperation with the INT-RX-S module (PERFECTA 16 Firmware version 1.02 or higher)
- firmware updates available
- passwords:
  - 15 user codes



- 1 service code
- editable names (of users, partitions, zones, outputs and modules) for easy control and supervision of the system
- timers:
  - 8 timers with exceptions setting capability
- memory of 3584 events
- automatic diagnostics of main components of the system
- built-in switching power supply:
  - overload protection
  - battery deep discharge protection
  - battery charging current control
- programming control panel settings:
  - locally – keypad, computer with PERFECTA Soft program installed, connected to the control panel RS-232 (TTL) port
  - remotely – computer with PERFECTA Soft program installed, connecting to the control panel via GPRS

AUX output	500 mA / 12 V DC
Current-carrying capacity of programmable high-current outputs	1000 mA / 12 V DC
Low current programmable outputs rating	25 mA / 12 V DC
Voice messages	16
Environmental class according to EN50130-5	II
Communication buses	1
Maximum number of programmable inputs	16
Maximum number of programmable outputs	12
Maximum humidity	93±3%
Max. current consumption	180 mA
Maximum current consumption from the battery	160 mA
Keypads	do 4
Weight	105 g
Battery cut-off voltage (±10%)	10,5 V
Power supply output voltage	12 V DC ±15%
Supply voltage (±15%)	18 V AC, 50-60 Hz
Battery failure voltage threshold (±10%)	11 V
Telephone numbers for notification	8
Current-carrying capacity of KPD output	500 mA / 12 V DC
Event log	3584
Standby mode current consumption	150 mA
Current consumption from battery - standby	100 mA
Power supply output current	2 A
Battery charging current	500 mA
Security grade according to EN 50131	Grade 2
Partitions	2
Timers	8
Users	15
Programmable wired inputs	8
Programmable wired outputs	4
Supplying outputs	2
Board dimensions	160 x 68 mm
Output voltage range	10,5 V...14 V DC
Operating temperature range	-10...+55 °C
Recommended transformer	40 VA