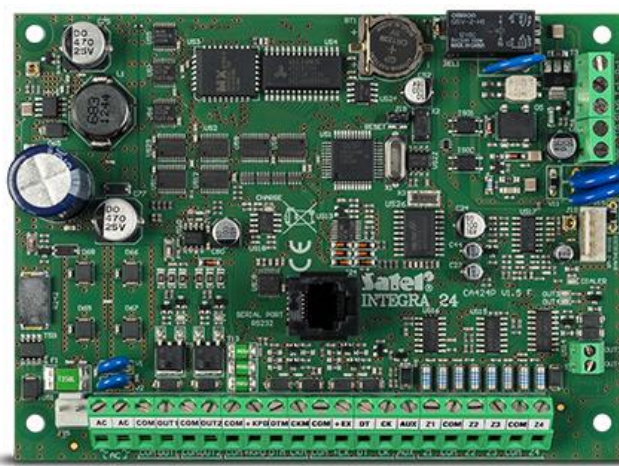


# INTEGRA 24

Advanced alarm control units providing alarm functions and optional implementation of home automation and access control systems. With a broad range of extension modules, their applications can be adapted to individual needs: from minor systems to extensive installations. Communication features combined with additional modules, such as GSM and TCP/IP, are a major advantage of the **INTEGRA** control units.

- 4 up to 24 zones
- 4 partitions
- 4 up to 20 programmable outputs
- keypads and expansion modules buses
- built-in telephone dialer with monitoring, voice messaging and remote control features
- access control and home automation features
- system operation with touchscreen keypads, LCD keypads, partition keypads, keyfobs and proximity cards or remotely with mobile phone or PC
- 16 independent timers for automatic control
- event log with 439 entries and event printing feature
- 16+1+1 users
- RS-232 port – RJ type socket
- flash firmware upgrade with a PC
- built-in 1.2 A switching mode backup power supply with battery charging and diagnostic features
- option of not reporting possible problems with connecting to the SATEL server as a failure



Protection class	S
Max. battery capacity	7 Ah
Control panels	13,8 VDC
Low current programmable outputs rating	50 mA
High current programmable outputs rating	2 A
Power supply rating	1,2 A
Board dimensions	142 x 106 mm
Operating temperature range	-10...+55 °C
Main board supply voltage (±15%)	18 V AC, 50-60 Hz
Standby mode current consumption	121 mA
Max. current consumption	204 mA