

SDA-250

Standalone smoke detector

sda-250_en 03/25

The detector detects the presence of smoke, which is one of the signs of fire. When smoke is detected, audible and visual signaling is started. The detector meets the EN 14604 requirements.

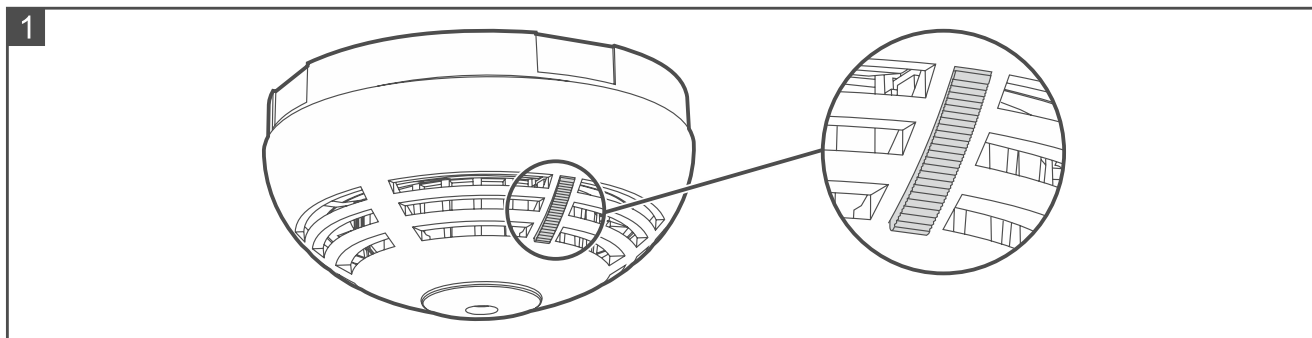
1. Features

- Visible smoke sensor.
- Detection of dirty smoke chamber.
- LED indicator.
- Built-in sounder (alarm and low battery signaling).
- Detector test / reset button.
- Powered by CR123A 3 V battery.
- Battery status control.

2. Description

Fire alarm

The fire alarm is generated when smoke is detected. It is signaled by a steady ON light of the LED indicator and a continuous beep. The signaling goes on for up to 5 minutes. Press the test / reset button (Fig. 1) to clear the alarm and turn off the signaling. The smoke detection function will be blocked for 5 minutes after the alarm is cleared.



Detector test

If you want to test the operation of the detector, press the test / reset button (Fig. 1). You will hear a short beep. After a few seconds, the fire alarm should be generated. Test the detector at least once every 6 months.

LED indicator

The LED indicates:

- dirty smoke chamber – 2 short flashes every 30 seconds,
- low battery – 3 short flashes every 30 seconds,
- alarm – ON (for up to 5 minutes).

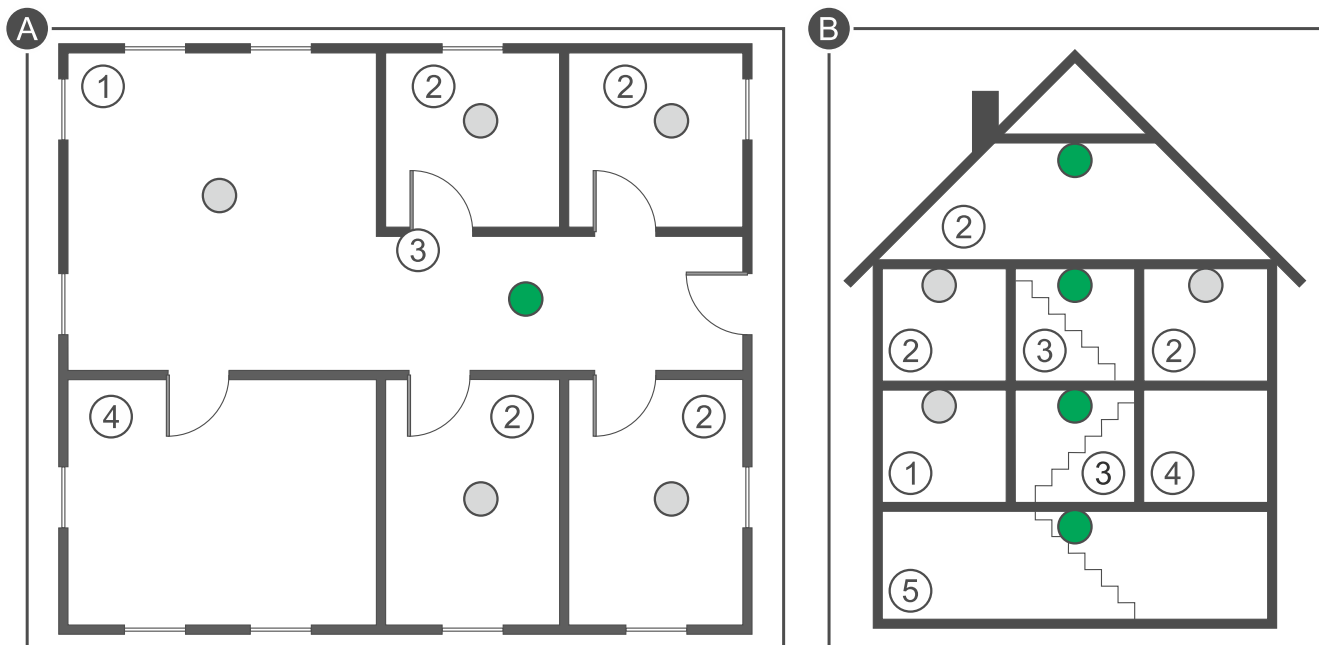
Sounder

The sounder indicates:

- low battery – 3 short beeps every 30 seconds,
- alarm – continuous beep (for up to 5 minutes).

3. Tips for installation

- The detector should be installed indoors, in spaces with normal air humidity.
- Do not install the detector outdoors.
- The detector should be installed on the ceiling, as close as possible to the center of the room.
- Do not install the detector in places with high concentration of dust and/or formation and condensation of water steam.
- Do not install the detector near heaters, cookers, fans or air-conditioner outlets.
- Do not install the detector in places where there is no unobstructed movement of air (e.g. in recesses, niches, etc.).



Explanations for figures A and B:

- ① living room.
- ② bedroom.
- ③ hall, lobby, etc.
- ④ kitchen.
- ⑤ basement.
- primary location for detector installation.
- additional location for detector installation.

4. Installation



There is a danger of battery explosion when using a different battery than recommended by the manufacturer, or handling the battery improperly. Do not

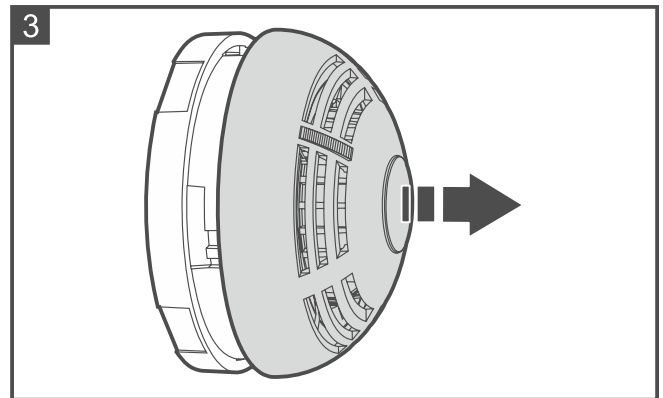
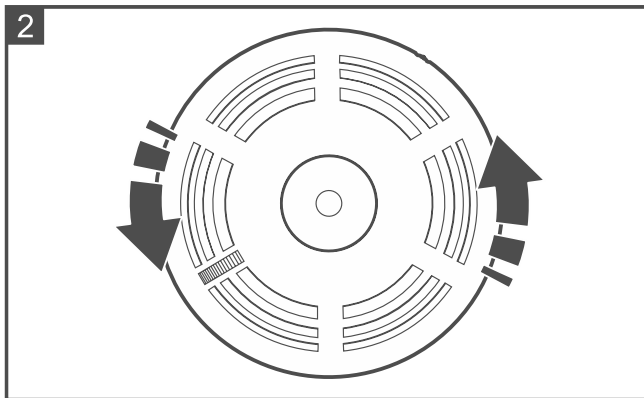
crush the battery, cut it or expose it to high temperatures (throw it into the fire, put it in the oven, etc.).

Do not expose the battery to very low pressure due to the risk of battery explosion or leakage of flammable liquid or gas.

Be particularly careful during installation and replacement of the battery. The manufacturer is not liable for the consequences of incorrect installation of the battery.

Do not install the battery if the sounder is disconnected.

1. Remove the plastic dust cover.
2. Turn the cover counter-clockwise (Fig. 2) and remove it (Fig. 3).

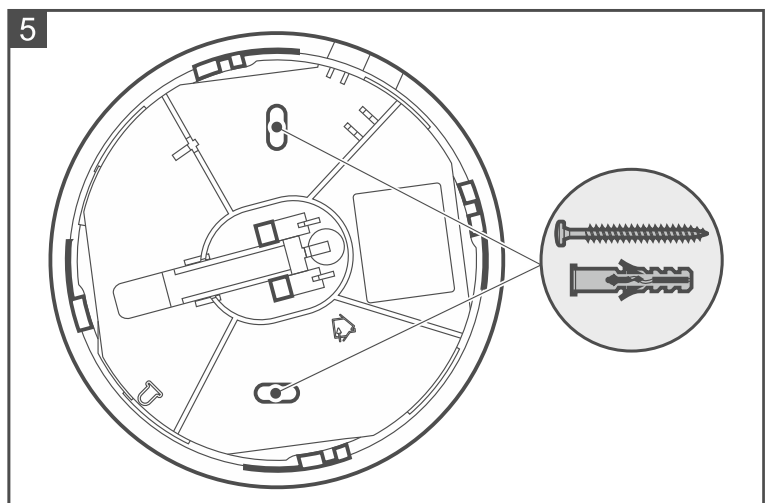
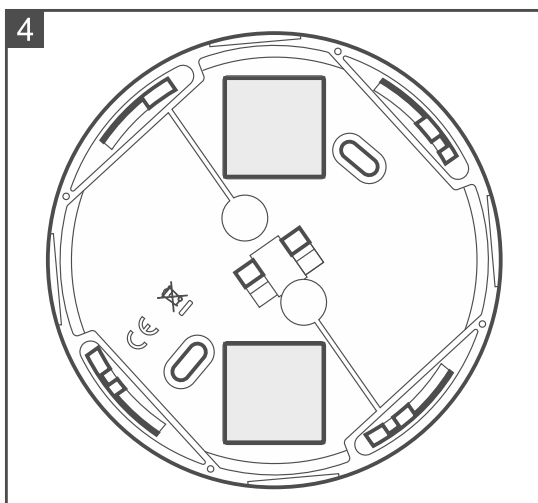


3. If the detector is to be mounted on the ceiling using a double-sided mounting tape:
 - stick the tape to the enclosure base and keep pressing for several seconds (Fig. 4).
 - stick the enclosure base to the ceiling and keep pressing for several seconds.



The surfaces to be joined using a double-sided tape must be clean and dry. They must be free from dust and grease.

4. If the detector is to be mounted on the ceiling with screws:
 - place the enclosure base against the ceiling and mark the location of the mounting holes (Fig. 5).
 - drill the holes in the ceiling for wall plugs (anchors). The wall plugs provided with the detector are intended for concrete or brick. For other types of surface (drywall, styrofoam), use other appropriately selected wall plugs.
 - secure the enclosure base to the ceiling with screws.



5. Install the battery.
6. Replace the detector cover and lock it with a screw. The screw is provided in the bag together with the wall plugs and screws for mounting.



The cover cannot be replaced when there is no battery inside the detector.

7. Press the test / reset button (Fig. 1). A fire alarm should be generated soon after.
8. Press again the test / reset button to clear the alarm.

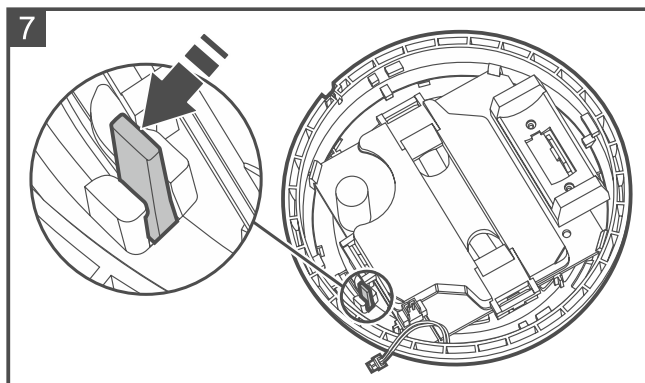
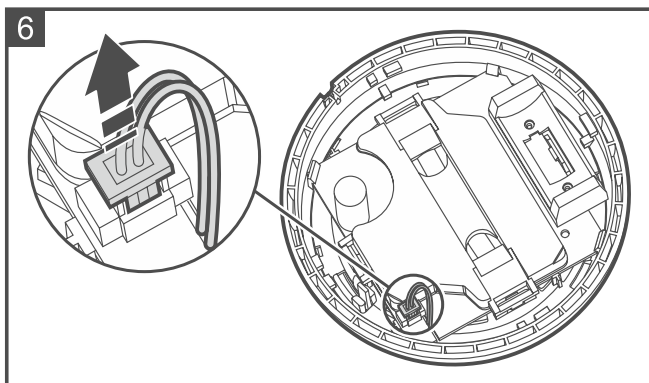


If in the premises where the detector is installed, any work is being carried out that may cause dirt to build up in the smoke chamber, put a plastic dust cover on the detector. Remove it after the work is finished.

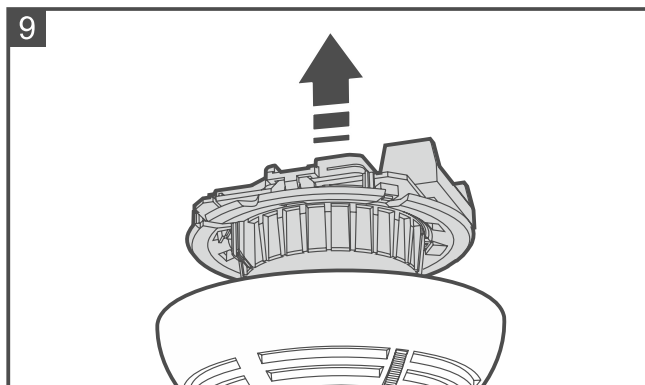
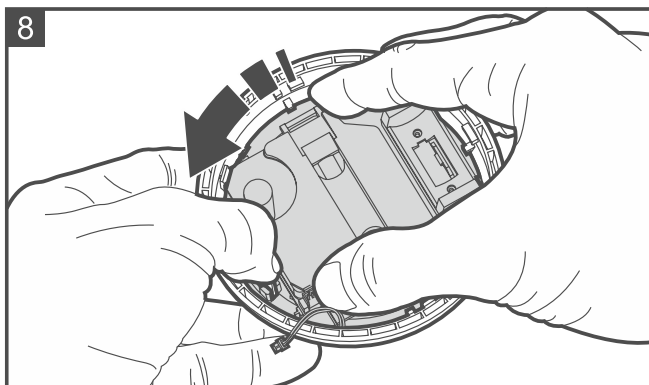
5. Cleaning the smoke chamber

When the detector indicates dirty smoke chamber (2 short flashes of the LED indicator every 30 seconds), do the following.

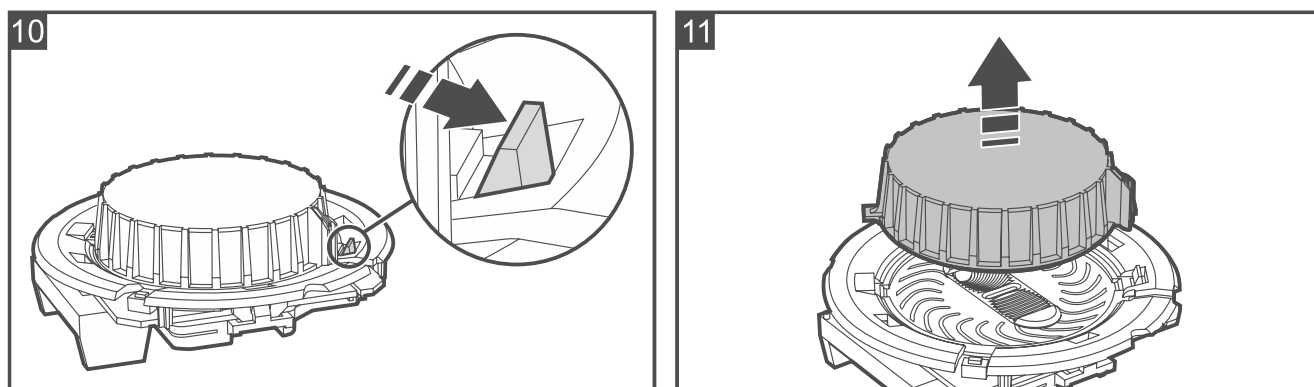
1. Remove the cover locking screw and open the detector enclosure.
2. Remove the battery.
3. Disconnect the plug connecting the sounder wires with the electronics board (Fig. 6).



4. Pull the release lever (Fig. 7) to unlock the electronics module and turn it counter-clockwise (Fig. 8).
5. Remove the electronics module with the smoke chamber (Fig. 9).



6. Release the mounting catch (Fig. 10) and remove the smoke chamber cover (Fig. 11).
7. Using a soft brush or compressed air, clean the labyrinth in the cover, as well as the base of the smoke chamber. Pay attention to the recesses where LEDs are installed.
8. Replace the smoke chamber cover.
9. Lay the sounder wires in the appropriate grooves.



10. Secure the electronics module with the smoke chamber in the cover and turn it clockwise.
11. Reconnect the plug connecting the sounder wires with the electronics board.
12. Install the battery.
13. Replace the detector cover and lock it with a screw.
14. Press the test / reset button (Fig. 1). A fire alarm should be generated.
15. Press again the test / reset button to clear the alarm.

6. Battery replacement

When the detector indicates low battery (3 short flashes of the LED indicator and 3 short beeps every 30 seconds), do the following.



When replacing the battery, wait about 1 minute between removing the old battery and installing the new one.

1. Remove the cover locking screw and open the detector enclosure.
2. Remove the low battery.



The used batteries must not be discarded, but should be disposed of in accordance with the existing rules for environment protection.

3. Install a new CR123A 3 V lithium battery.
4. Replace the detector cover and lock it with a screw.
5. Press the test / reset button (Fig. 1). A fire alarm should be generated.
6. Press again the test / reset button to clear the alarm.

7. Specifications

Battery	CR123A 3 V
Battery life expectancy	up to 10 years
Standby current consumption	15 μ A
Low battery voltage threshold	2.75 V
Operating temperature range.....	0°C...55°C
Maximum humidity	93 \pm 3%
Dimensions	ø108 x 54 mm
Weight.....	170 g

The SDA-250 standalone smoke detector conforms to the essential requirements of the EU Regulations and Directives:

CPR 305/2011 Regulation of the European Parliament and of the Council of 9 March 2011 laying down harmonized conditions for the marketing of construction products and repealing the Council Directive 89/106/EEC on construction products;

RED Directive 2014/53/EU of the European Parliament and of the Council of 16 April 2014 on the harmonization of the laws of the Member States relating to the making available on the market of radio equipment and repealing Directive 1999/5/EC.

The CNBOP-PIB Certification Body in Józefów issued the Certificate of Constancy of Performance 1438-CPR-0645 for the construction product SDA-250 Standalone Smoke Detector, confirming its compliance with the requirements of EN 14604:2006.

The CNBOP-PIB Certification Body in Józefów has tested the SDA-250 Standalone Smoke Detector confirming its compliance with the EN 14604 Standard, within the scope of Appendix L (approved for the use in caravans and camper vans).

The Certificate and the Declaration of Performance can be downloaded from the **www.satel.pl** website.



SATEL Sp. z o.o. • ul. Budowlanych 66 • 80-298 Gdańsk • POLAND

1438

1438-CPR-0645

DOP/CPR/0645

EN 14604

Fire safety. SDA-250 standalone smoke detector operating based on the light scattering principle, for use in buildings.

Declaration of Performance DOP/CPR/0645

Application – fire safety.

Technical specifications – see this manual.