



Satel®

Since the establishing in 1990, each and every year of SATEL's activity brought to the market new products intended for protection of people and property. Our product portfolio contains a wide range of devices and accessories for security systems, as well as the devices for central monitoring stations. Strategic investment in new technologies and innovative solutions allow us to keep leading position on the market. Our missions is to provide security for both individual and corporate customers, and the raising of quality standards for the whole people and property security industry.

Satel®
www.satel.eu

SATEL SP. Z O.O.
Budowlanych 66
80-298 Gdansk, Poland
fax +48 58 522 66 01
EU VAT: PL 5840154038

Export DEPARTMENT
tel. +48 58 320 94 11
e-mail: trade@satel.pl

**Intelligent
Security Solution**

INTELLIGENT SECURITY SOLUTIONS

about Satel

Over 20 years experience

SATEL has been present on the Polish market since 1990. We are the unquestionable leader in the security systems industry, specializing in design, production and sales of a wide range of up-to-date devices used for construction of security alarm systems.

State of the art and top quality of SATEL's products

The innovation of solutions means not only modern technology. We know very well how important it is that the devices we offer be friendly for you and your family. This is why we place special emphasis on legibility and ease of operation, as early as at the product design stage. The plain text menu systems, a system of intuitive designations on keypads, or installer's software running in Windows environment – these are some of the solutions aimed at facilitating operation of our products. We do care about being in line with the current trends in product design. Therefore, we have developed our own design and production departments to create top quality components from which the enclosures of our products are made.

Combining modern design with concern for the highest quality helps us achieve success not only on the Polish market, but also on many markets worldwide. Since the Company came into existence, its activities have been based on a system that served to ensure the highest quality of our products. In 2002 we obtained the certificate of conformity to ISO 9001:2000, thus proving the high quality standards used by our Company. We exceed the ISO specified requirements – each product leaving our production line undergoes full-scope functionality testing and receives a guarantee of reliability.

To make life easier

Our task is to maintain our position as the technological leader in the market of security devices. We offer functional state-of-the-art solutions for each area of property protection. More than 260 employees engaged in fulfillment of this task, as well as the dynamically developing production facilities, make it easier to achieve the set objectives.

The "Safe Way of Living" catalog has been prepared to present our customers the functionality of security systems we offer. We would like to emphasize that our offer, in addition to traditional alarms, also includes many other useful devices that will make your home safe and functional. With these devices you can free yourself from performing certain daily activities, even when you are away from home.

We will begin presentation of the security systems with an overview of the essential components of the alarm system, including description of their basic features and purpose. We also want to show you the enormous opportunities offered by our products.

You will learn the advanced solutions that will inspire you to create a system tailored to the needs of your family. We will also provide diagrams, showing correct arrangement of the presented devices in typical areas. We hope you will enjoy this catalog and that it will help you specify in detail your requirements to be met by the security system to ensure peace, sense of safety and comfort for your nearest and dearest.

safe way of living
safe way of living

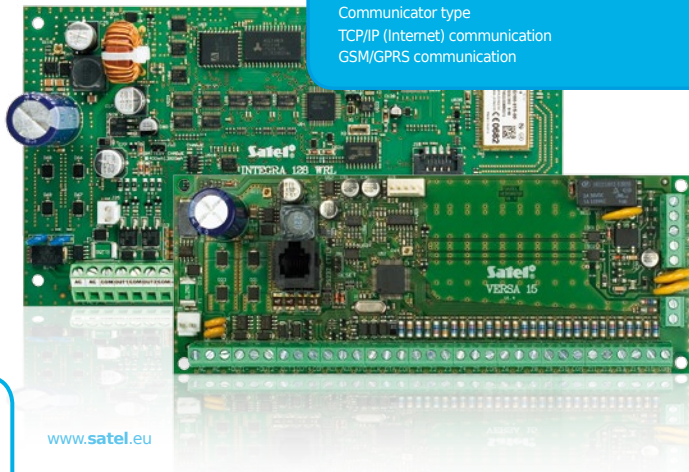


Alarm control panels

The heart of a security alarm system is the control panel, which is responsible for functionality of the entire system. The up-to-date control panels in SATEL's portfolio, e.g. the INTEGRA series, make it possible not only to create a reliable alarm system, but also to make use of its extra features that will relieve you from performing some everyday operations: switching on lights in the corridor, turning off air-conditioning when you open a window, or even starting the garden watering system. The interesting offers include the INTEGRA 128-WRL control panel or the MICRA alarm module, which, owing to the advantages of wireless communication, are an ideal solution wherever making a conventional installation is difficult or just impossible. Where the wireless communication and so much enhanced functionality is not necessary, you can make use of simpler devices, such as the VERSA series control panels. They offer high reliability along with easy and intuitive operation, thus ensuring effective security for apartments and small houses.

CONTROL PANEL FEATURES

	INTEGRA 128-WRL	INTEGRA 128 Plus	VERSA Plus	VERSA 15	MICRA
Support for wireless detectors	yes	option	option	option	yes
Advanced automation features	*	*	-	-	-
Basic automation features	*	*	*	*	*
Remote reporting	yes	yes	yes	yes	yes
Max. number of voice/text messages	32/64	32/64	16/64	16/64	-/89
Voice messaging	yes	yes	yes	yes	no
Communicator type	GSM	PSTN	PSTN/GSM	PSTN	GSM
TCP/IP (Internet) communication	yes	option	yes	option	no
GSM/GPRS communication	yes	option	yes	option	yes



Standard keypads

Keypads are used for daily operation of the alarm system. The classic devices of this type, depending on their model, inform the user about the state of the system by means of messages displayed on LCD screen or indicated by LEDs. Which keypad should be selected depends on the complexity of the alarm system. In solutions which are not intended to additionally perform automation tasks, the traditional simple devices will prove ideal. The LCD keypads in SATEL control panels communicate with the user through an easy-to-understand transparent menu in Polish. In the case of simple LED type keypads, you may need to memorize the less frequently used control combinations and the meaning of individual indicators.

Arming and disarming the system from a keypad will require the use of password/code, which is a "virtual key" to the system. Another way to facilitate the operation, which is only available in some keypads for INTEGRA control panels, is the possibility of using key fobs or proximity cards which can make the need to remember passwords unnecessary. It is worth noting that the keypad is one of the most prominent items in the interior. For this reason, you can choose from many models which differ in shape of enclosure and color of backlight so that it can match the individual character of your home or apartment.



Keypads to control the home alarm and automation systems

The standard keypads perform well in the everyday basic operation of the alarm system. However, if you also want to use the advanced automation functions offered by the INTEGRA control panels, such as the control of lighting, heating, air conditioning or watering greenery, the INT-TSG touch screen keypad or the INT-KSG touch keypad will be a better choice. The former device offers the quality and convenience known from modern smartphones and tablets. The color display with capacitive touch panel makes operation of the system nice and simple. Large icons on the screen facilitate both arming and disarming of the system, as well as control of the automation devices. The macro commands allow you to easily perform a sequence of actions with just one tap on the icon symbolically representing a specific scenario, which further facilitates the keypad handling even for inexperienced users. In addition, the attractive design makes the device a perfect complement to any interior, either modern or decorated in a traditional way. The INT-TSG is available in two colors – white and black – so as to even better match the room where it will be installed. For those users who prefer the classic interface to operate the system, but do not want to give up the ability to easily control the home alarm with additional automation components, the best choice may be the INT-KSG touch keypad. Like the touch screen keypad, the INT-KSG allows you to easily control devices via the quick access menu with individually personalized sets of macro commands.



safe way of living
safe way of living



meet our **products**

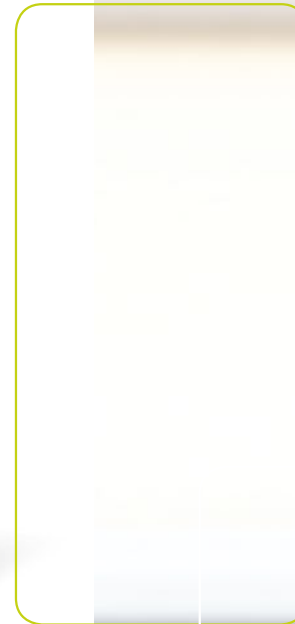
Unlimited capabilities to control the intelligent alarm system

Nowadays, when smartphones, tablets and other touch screen devices are omnipresent, also the keypads of intelligent alarm system must offer extremely intuitive operation and powerful features. The INT-TSI keypad is exactly such a device. It allows the user to comfortably operate the home security alarm system as well as to perform even the most complex scenarios of home automation control. The large, 7" touch screen displays clear information about the status of the system components, while the graphical user interface allows easy and intuitive operation, which should not cause problems even for novice users. As befits a state-of-the-art keypad, the INT-TSI can be personalized to suit your needs and preferences: from a simple wallpaper change, which can be replaced with uniform background, selected image or even your own picture by defining the style and function of the individual elements, to complete customization of the interface to the individual needs of the user. Aesthetic and neat design of the keypad and the possibility to choose from two neutral colors of the enclosure – either white or black – make the device fit perfectly into any interior.



Gold Medal

of 20th International Security Fair SECUREX 2014



way of living
Safe Way of living

INTELLIGENT SECURITY SOLUTIONS
meet our **products**

The capabilities offered by the INT-TSI keypad are enormous. On its 7" capacitive screen, you can put a lot of information and a number of control keys. The most basic functions of the keypad include, of course, operation of the home alarm system. The transparent interface allows you to instantly arm and disarm the system, as well as to see the status of each partition. Designers of the new keypad took into consideration even such detail as how to safely display the screen keyboard (which is used to enter the password). The keyboard is displayed each time at a different place, so as to prevent the chance of reading the password from the fingerprints left on the display. With the ability to place on keypad screen the so-called widgets or keys with sequences of assigned tasks, it is possible to control individual elements connected to the system in virtually any way. Complex tasks, such as running the suitable lighting scenario in the selected room or even in the whole house, come down to tapping the dedicated screen widget. In addition to alarm system operation and home automation control, the INT-TSI also provides a whole range of innovative solutions. It is possible to send images from external IP cameras to the keypad, thus changing it into a small monitoring center which will enable you to see what is going on around the house. You can also put on the screen some buttons which will allow you to quickly call the fire service, medical aid or security agency. Navigation through all features of the keypad is easy with the tab bar which contains elements grouped thematically and tailored to individual user's needs. The INT-TSI also provides integration with the KNX system bus, which allows you to control virtually every element of smart home. Thus, the INT-TSI capabilities are limited only by the imagination of the user and the installer.



safe way of living
safe way of living



meet our **products**

Sirens

The sirens perform different functions in the security alarm system. The purpose of the indoor sirens is to fill the inner spaces with unpleasant sound, its intensity being close to the pain threshold, which is also intended to make the intruder leave the premises. The presence of the outdoor sirens should discourage some intruders from forcing entry into the house or apartment protected by the alarm system. Besides, their loud sound and flashing light are likely to draw attention of other people in the emergency situation.

A good siren must ensure protection against an attempt of deliberate damage or tamper, and, in case of outdoor devices, also protection against adverse weather conditions. Therefore, a well-thought-out and proven design, along with reputation of the manufacturer, can be a guarantee of long-term, trouble-free operation. When choosing the siren, it is advisable that LEDs are used as a light source for optical signaling – not only does it ensure excellent performance, but is also more reliable as compared with incandescent lamps used in the simplest devices. SATEL's products include a range of sirens differing among themselves not only by their shape and size, but also by the applied technologies and protection level. In order to select the appropriate equipment it is necessary to turn to an expert for assistance and assessment of potential risks.



safe way of living
safe way of living

meet our **products**

Passive infrared motion detectors (PIR)

Motion detectors are used to detect the presence of an intruder in a protected area. The SATEL's offer includes a whole range of such devices, among which the passive infrared detectors are the most popular ones.

The simplest detectors available are AMBER and AQUA Plus, which are technically very similar. Both of these devices reliably fulfill their role in the typical domestic premises: living rooms, studies and bedrooms. The AMBER and TOPAZ detectors are characterized primarily by a compact, small-size enclosure, so their presence does not virtually interfere with the appearance of the room. The more advanced GRAPHITE detectors provide an improved signal analysis system, hence they are not only more effective in detecting intruders, but also perform very well in more difficult conditions. As a result they can provide effective protection in larger spaces, and those where natural drafts may occur, for example, in corridors or lobbies. Wherever the best performance of intruder detection is required, it is advisable to use the IVORY detectors. With their unique design they cope perfectly well with motion detection, even in irregularly shaped rooms, while also providing protection directly beneath the detector, owing to the access zone protection.

It is good to know that when choosing to install motion detectors where pets are present, for example a dog or a cat, you should choose a special type of detector. The detectors suitable in this situation are the GRAPHITE Pet and AQUA Pet, which are adapted to the presence of pets.

Quite a unique device is the AQUA Luna, equipped with a LED illumination system. They can be used to light passageways and stairways, as well as to fill the room with a soft light when you are watching movies.



Dual technology motion detectors

The SATEL's offer of motion detectors is complemented by dual technology detectors. Compared with the passive infrared detectors, designed to protect the typical living and office spaces, the dual technology detectors successfully cope with the task of protection in areas where adverse conditions prevail: there are drafts, hot air vents are used or air conditioner is running. It's the technology that makes them superior compared to standard PIR detectors – by the use of two different physical phenomena to detect intruders they do provide internal verification mechanism that rejects disturbance signals. Examples of places where it is good to use the dual technology detectors are unheated garages and utility rooms, and also e.g. living rooms equipped with fireplace. COBALT series detectors effectively fulfil most of the conventional functions of dual technology sensors, while the GREY detectors contain a miniature microwave sensor, designed to operate at 24 GHz. Together with the miniaturisation of other switching fabrics of the detector, it has enabled the manufacture of a dual technology detector which is located inside the housing of an existing PIR detector. Thanks to the small size of its housing, the GREY detector suits the majority of interiors. The NAVY detector is an innovative solution within SATEL's dual technology detectors portfolio. This detector comprises a PIR sensor and an acoustic glass-break detector in one housing. As a result, the NAVY sensor facilitates the provision of comprehensive supervision of rooms with large glazed areas without the need to increase the number of devices or cabling quantity within an installation. The most advanced parameters, however, are displayed by the SILVER detector which is equipped with a unique technology of cloaking attempts detection. This allows the SILVER detectors to provide the most comprehensive level of security from among all other available motion detectors.

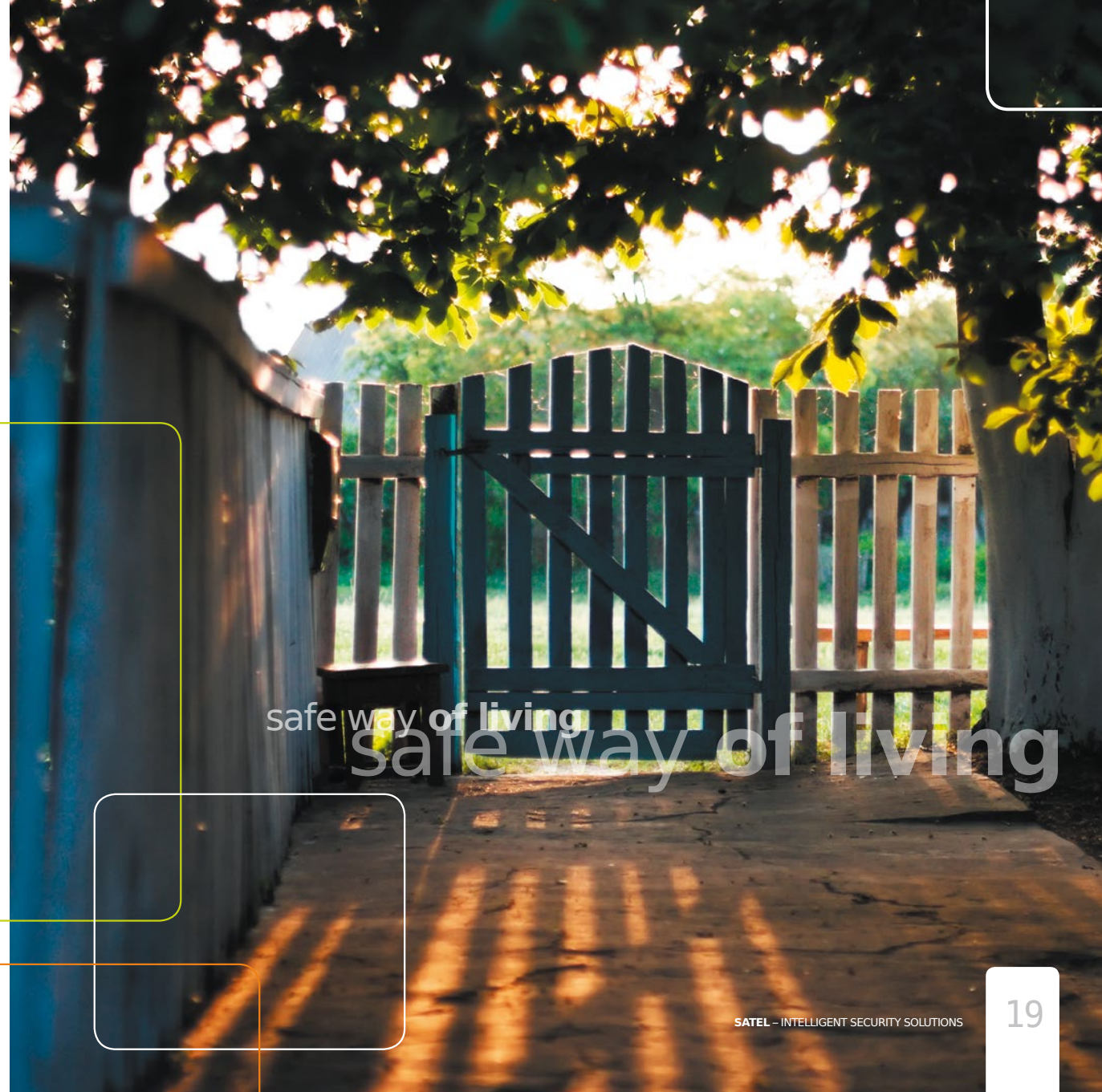


meet our **products**

Detectors – perimeter protection

SATEL also offers a range of detectors which allow creation of perimeter protection, aimed at detecting an attempt of intrusion into the protected area. Such detectors include a series of magnetic contacts, commonly called reed switches. Their task is to detect attempts to open secured windows or doors. A similar role is played by vibration detectors, such as VD-1 or AVD-100, which react to shocks caused by the breaking of locks or wrestling with the hinges. Another detector of this type is the INDIGO glass break detector, which by means of detecting sound waves responds to an attempt of breaking windows or glass showcases.

Another group of detectors to form a perimeter protection are the ACTIVA active infrared barriers. They create an invisible "fence" using a beam of infrared radiation, the crossing of which will send a signal to the control panel. Owing to their suitable design, these barriers can be used not only to protect the line of doors and windows inside the house, but also to create protection outside the house, for example, along the fence, or even to provide additional security to valuable collections or works of art.



Detectors – additional protection

An advanced system can provide a much broader scope of security than just protection against burglary. For this purpose, it must be equipped with additional detectors, able to detect early enough various types of threats. If the system is equipped with the DG-1 series of gas detectors, it will detect and warn of the danger of leakage of explosive natural gas or propane-butane, or poisonous carbon monoxide. Moreover, the use of DG-1 TCM narcotic gas detectors provides protection against attempts of an intrusion preceded by swooning the homeowners with chemical substances which can happen, especially in the suburbs. The smoke and heat detector, such as the wireless ASD-110, may allow you to early respond to the appearance of smoke, caused even by the electric iron you left plugged in. Yet another example of a broad approach to security is using the flood detectors, such as the FD-1 or its wireless equivalent AFD-100 – thanks to them, you can protect yourself against the effects of flooding caused, for example, by an open tap in the bathroom.

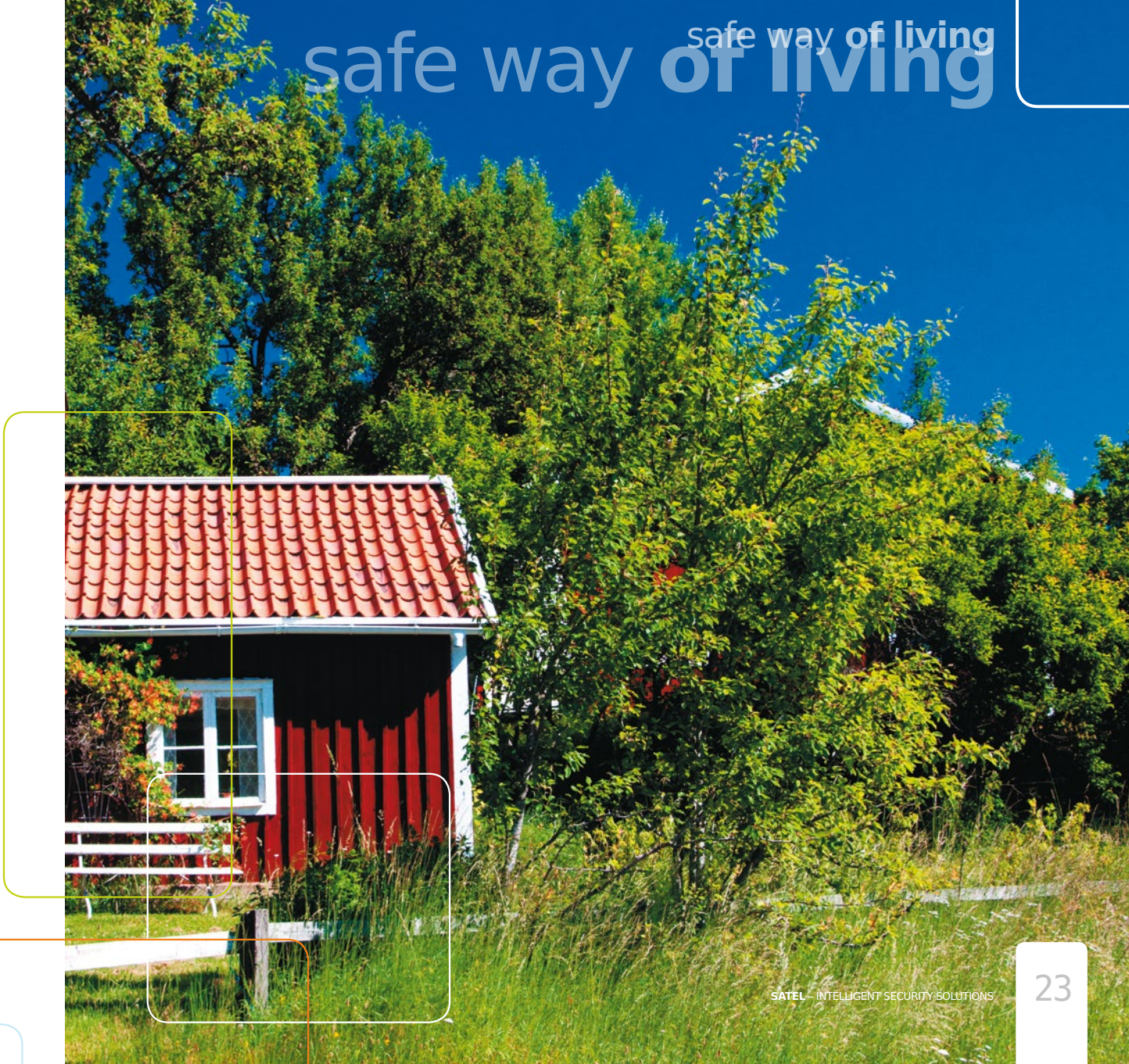


Protection for small buildings

The MICRA wireless system is distinguished by its philosophy among other SATEL's products. It is designed to provide protection for small premises: holiday cottages, workshops, or even storerooms for recreational or gardening equipment. Its heart is the MICRA alarm module, which performs the basic functions of the control panel: receiving signals from the detectors, triggering the siren, or messaging. It is equipped with a battery backup power supply to ensure uninterrupted operation even at 230 V power mains troubles, as well as a GSM / GPRS communicator to enable SMS messaging and reporting to the security firm. Daily handling of the MICRA system cannot be easier. You can use key fobs, mobile phones or an additional wireless keypad to arm or disarm the system. Because both wired and wireless detectors can be connected, the properly configured MICRA system can provide optimum and reliable protection for small buildings. Another advantage of the MICRA system is its capability of acoustic alarm verification, or remote monitoring by phone of what is happening inside the protected premises which may help avoid an unnecessary intervention. Still another interesting feature is the ability to remotely control devices connected to the MICRA module, using a mobile phone or key fob. This function allows you e.g. to start watering the garden, or turn on heating.



safe way of living
safe way of living



meet our **solutions****Communication and messaging**

Efficient transmission of information on the alarm is one of the key functions of security alarm system. One of the possible options is transmission of the digital signal to the alarm monitoring center supervised by security agencies, using the regular telephone line. Thus the security guards will be able to quickly intervene to protect your property. Another solution is transmission of a voice message, for example, to your cellular phone. An undisputable advantage of the INTEGRA and VERSA control panels is the capability to discriminate between and provide detailed information on the events, so you can know what is going on in your home already at the moment of messaging.

Unfortunately, if the telephone line is out of order – either as a result of an accident or the intruder's action – the control panel will be unable to transmit the alarm information. To avoid such a situation, you can fit your system with the GSM-4 device that will automatically replace the malfunctioning telephone line and enable the control panel to make the emergency connection. Another benefit of connecting the GSM module to the control panel is the capability of the latter to send an SMS message to the home owner in case of an alarm. Similarly as with the voice messaging, the INTEGRA control panels enable sending detailed information by means of SMS messages – not only about the alarms, but even on your kids coming home from school.

Quite different capabilities are offered by application of the ETHM-1 Plus communication module, using the TCP/IP networks (e.g. Internet). Owing to this device, **you can not only supervise your system from any place in the world, but also operate it by using the virtual keypad, available in the web browser or in the mobile phone.** Of course, as with all SATEL's devices, security is the main priority. Therefore, advanced methods of encryption and safeguarding against malicious attacks are used for the network communication in order to prevent unauthorized access.



safe way of living
Safe way of living

SATEL mobile applications – full control over your system – wherever you are...

In an attempt to meet the expectations of professionally active and dynamic persons spending most of their time out of home, SATEL has implemented a family of applications turning your mobile phone into an alarm system controller. MobileKPD enables you to start a free application using GPRS, 3G or WiFi and installed in your mobile to connect with the INTEGRA system equipped with the ETHM-1 Plus communication module in order to obtain up-to-date system status information and control the system itself. The MobileKPD family applications can be installed in different phones. The basic MobileKPD version is targeted at the majority of traditional phones supporting Java J2ME applications. It successfully operates on standard phones made by Nokia, Sony Ericsson, Samsung or numerous other manufacturers. Touchscreen phone users may take advantage of the functionalities offered by MobileKPD-2. This application comes in two versions: a universal version for phones and smartphones supporting Java J2ME and a dedicated version for cutting-edge devices supporting Apple iOS and Google Android systems.

The MobileKPD-2 Pro application offers an even broader scope of functionalities as it provides additional hotkeys making it possible to easily and conveniently activate the whole sequences of commands. Thus it is an ideal solution for the users who utilise the INTEGRA control panel capabilities to implement smart home systems requiring functionally extended control features. This extended version of the application is currently available for devices based on the Google Android system.

Users of alarm systems based on the MICRA module can also take advantage of the features ensuring remote control of alarm systems by means of smartphones. The MICRA CONTROL application enables them not only to remotely arm/disarm the standby mode but also check the system status and control selected devices. This method of MICRA module control is extremely user-friendly and the visually attractive design of the application results in the fact that operating the application is pure pleasure. The MICRA CONTROL application can be installed both in smartphones and tablets supporting the Google Android system. It can be installed via the Google Play store.



meet our **solutions**

Day and night protection

Before you start planning the security alarm system for your home, it may be worthwhile to consider which elements of its surroundings and when should be protected. Even in its simplest configuration, the system should not only cover the interior, but also the perimeter, i.e. the doors and windows. **By separating the interior and the perimeter sections, you can match the level of security to the daily rhythm of your life.** When leaving the home, turn on the full armed mode for an alarm to be triggered by both the opening of doors / windows and the motion of people inside. But when you stay inside and you want to ensure a sense of security to yourself and your nearest and dearest, the system will automatically activate the perimeter protection at a specified time. You and your family can move freely inside your home, while any attempt of forced entry through the doors or windows will be instantly sensed by the perimeter protection detectors. If your home has more than one level, you can turn on the full armed mode for the night, excluding the sleeping room, kids' rooms, bathroom and kitchen. An additional keypad installed on the upper floor will help take full advantage of the capabilities of such a system. **By selecting additional, independently controlled partitions, you can customize the system to be better suited to your individual lifestyle** and to ensure maximum safety for your family. Only this solution will guarantee that the system armed to the night mode will trigger an alarm at the time of forcing a door or window, before the intruder actually gets in.

So let's make sure that the installation design takes into account the elements of perimeter protection.



meet our **solutions**

Lighting control

When you are away for a longer time, be it holidays or business trip, the INTEGRA based security **alarm system will be able to simulate the presence of family members, which may discourage a potential burglar.** You can control the light automatically, according to the programmed timing diagrams, or in response to specific events (for example, in conjunction with twilight sensor). The control of lighting is not only presence simulation. The features incorporated in the INTEGRA control panels will allow you to automatically turn on the light in the corridor or on the stairway as soon as the detector senses your child going to the bathroom at night. If you want, the light will turn on with a limited intensity at nighttime, so as not to wake up your family. When you are coming home in the evening, your hands busy carrying shopping bags, the light in the lobby can go on automatically when you open the door so you don't have to reach for the switch in the darkness. In addition, using your mobile phone you can always turn the light on or off, for example, in your living room, without leaving the comfortable couch. After all, **the INTEGRA means not only safety but also comfort.**

It's worth mentioning that by the use of INT-KNX module, INTEGRA system may as well control KNX bus managed lighting. This enables very flexible home automation functionality and easy expansion of the system in the future.



safe way of living
safe way of living

Heating and air conditioning control

Using the INTEGRA control panel for heating control can bring you measurable savings in energy costs.

The control system can be programmed according to your daily rhythm, so that comfortable heating is switched on just before your arrival, so that you can come to a warm house. When you are away from home, the system will automatically go into economy mode. If, by way of exception, you have to stay longer at work, you can change your daily schedule via the Internet. Forget about having to close the valves when airing the room – the system can automatically turn off heating when the window is opened. This solution allows also control of the air conditioning operation – thus, both in winter and summer, **the SATEL system will provide you with maximum comfort and considerable savings.**

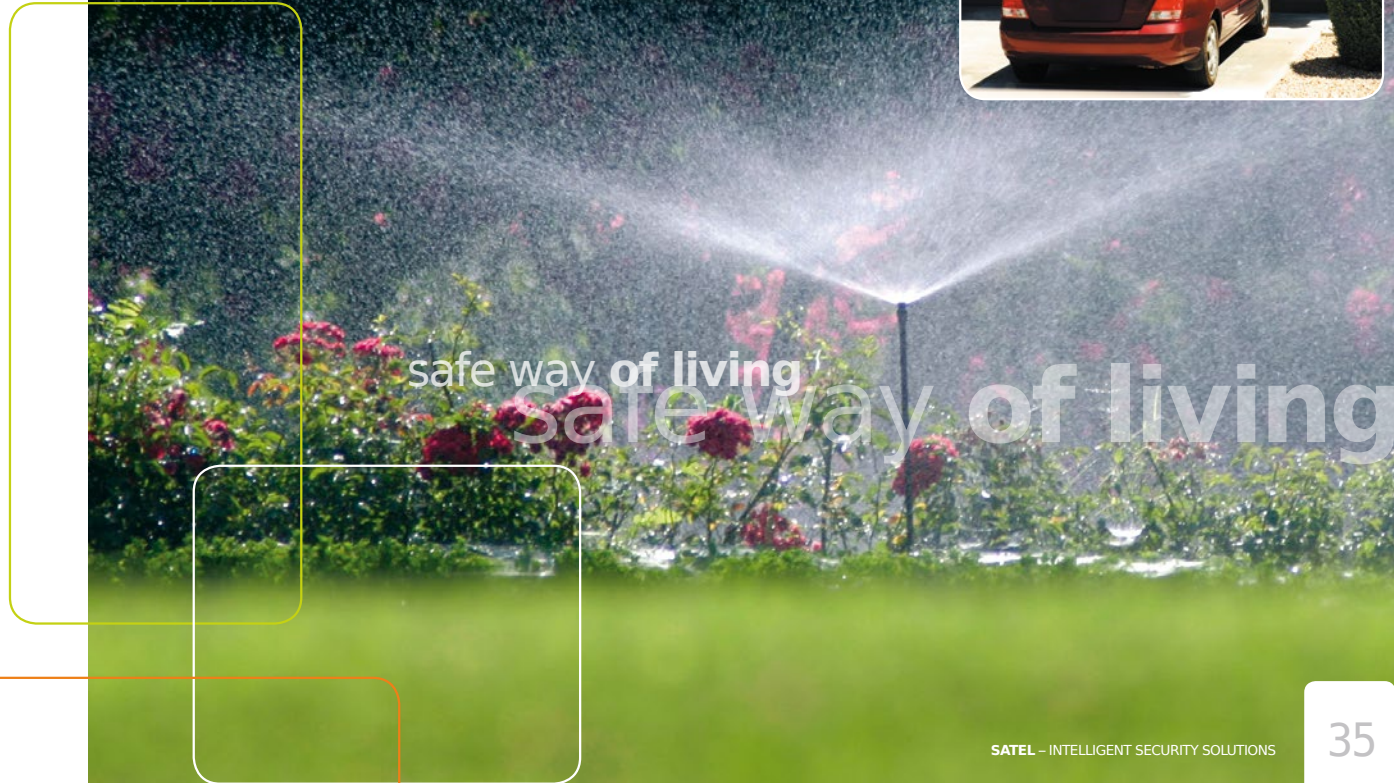
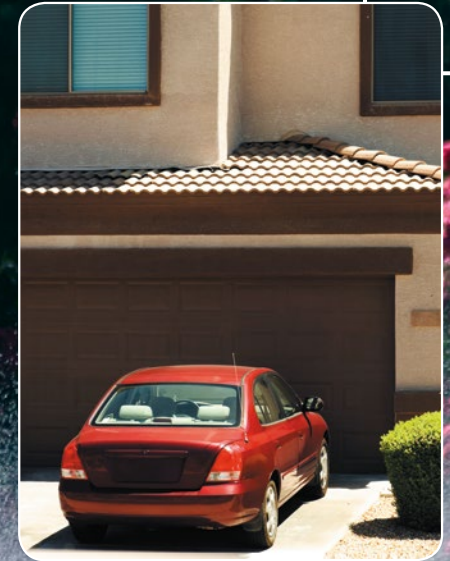


safe way of living
safe way of living

meet our **solutions**

Automatic garden watering, roller shutter and garage gate control

Having a system based on the **INTEGRA** control panel, you **can also take care of your garden**. Automatic watering of the greenery will start at the preset time, unless rainfall comes first. **The anti-burglary roller shutters can be automatically lowered** at the moment of arming – you do not have to bother about it any more when leaving the house or going to bed. When you come home and disarm the system, the roller shutters will rise automatically, filling your home with sunshine. If you would rather control the roller shutters manually, you can group them according to your wish so as to open or close some of them by using just one button. Integration of controls provides you with a simple way, **by using a mobile phone or a keyfob, not just to open and close the gate, but also to arm and disarm the alarm system in the garage**. You do not need any more to carry several remote controls to separately operate garage door, gate and alarm system.



meet our **solutions**

Remote control of the system

With advanced communications systems using GSM and TCP/IP (Internet) technologies, you will have regular contact with your home. This allows you to immediately respond to a variety of events. While at work, you can use your computer to make sure you did not forget to arm the system when leaving the home in the morning. When standing in a traffic jam in the winter, you can send an SMS to turn on the central heating in advance and arrive to a warm home. If, for the time of your absence, your home is left in charge of trusted neighbors, you can disarm the system remotely using a mobile phone to let them in to water your favorite plants. Then, after making sure that the house was locked back, you can re-arm the system in the same way.



meet our **solutions****Child-friendly home**

First and foremost, the alarm system means safety, including the safety of the youngest ones. If we want our kids to enjoy the benefits offered by an alarm system, this must be taken into account at the planning stage of the system. For example, the keypads to be used by children must be placed low enough to allow them not only to press the keys but also to read the information provided by the system. An interesting solution for the youngest ones can also be keypads equipped with a proximity tag reader. **All the child will have to do is to present its tag to the keypad to easily and reliably disarm the system** after returning from school. Another facilitation for the kids can be keyfobs for arming or disarming the system – thanks to them, the whole operation of the system will be as easy as pressing the proper button on the keyfob. **To make sure that our child returned home from school safely and in time,** you can use the notification feature available in the INTEGRA and VERSA panels. Thus, as soon as the child will have disarmed the system, **a notification will be sent to you, e.g. by an SMS message.** And every parent knows how invaluable such information is! Your alarm system can also take care of monitoring the time spent by your children at the TV or computer – simply program the timer to determine exactly at what times it will be possible to use digital entertainment.



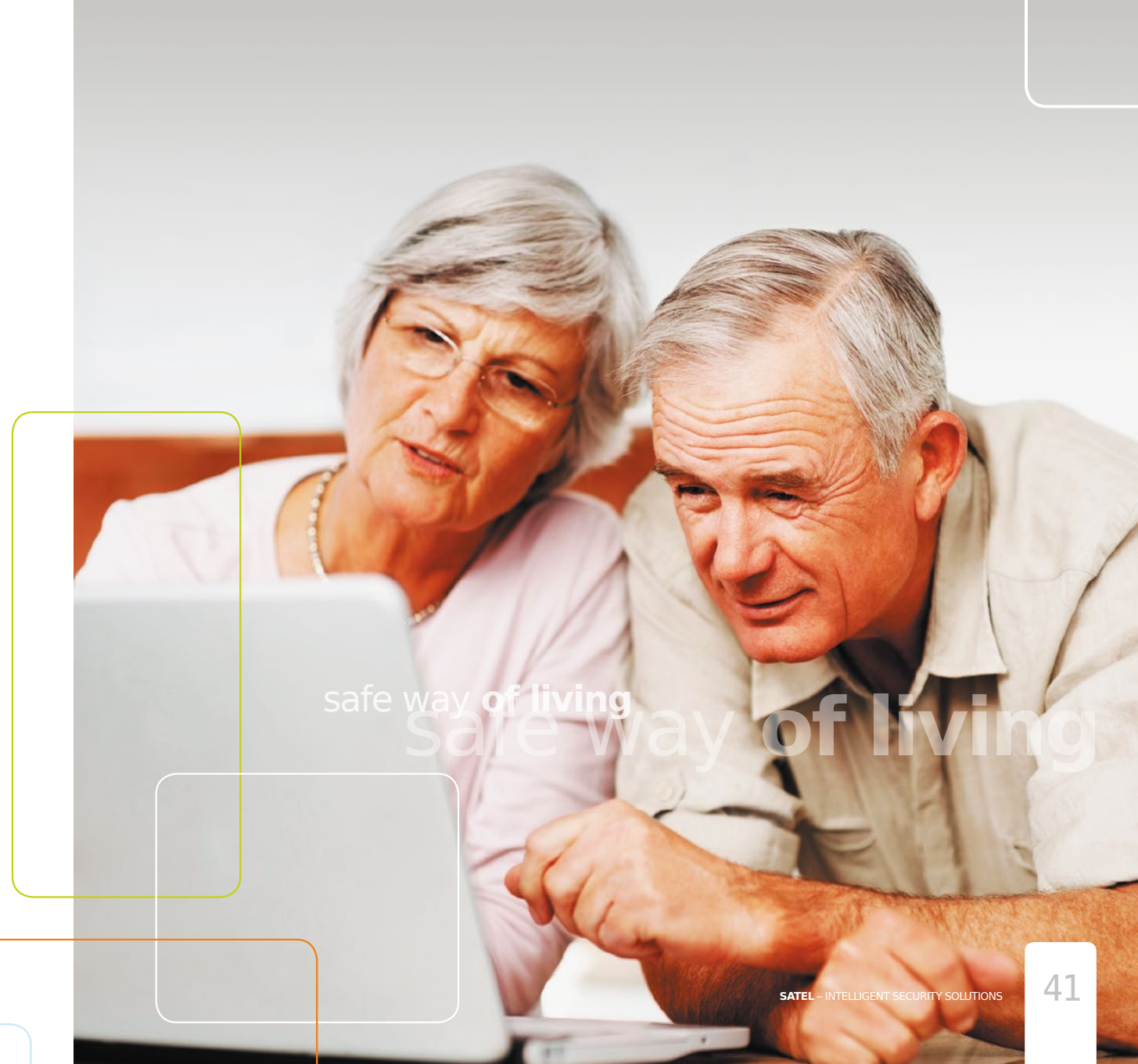
safe way of living
Safe way of living

meet our **solutions**

Addressing the needs of the elderly

The everyday operation of the SATEL alarm system is not complicated. **However, if you do not want to memorize the control codes, you can use the proximity tags / proximity cards or keyfobs.** Thus, all you have to do to arm or disarm the system is to bring the proximity tag / card close to the keypad / reader, or to press a button on the remote control keyfob. **These operations can be acknowledged by the control panel with a voice message.** In this simple way operation of the system will become easier for the elderly people.

To allow seniors to use the keypad, it is recommended that you choose one that provides the maximum legibility of information. Standing out in this regard is the INT-KSG, which – apart from its large screen – provides easy-to-operate touch-sensitive keys with efficient backlighting. These features make it easier for older people to use all the facilities offered by modern systems. **The alarm system also allows you to trigger an automatic emergency call when necessary.** For this purpose, you can use either keyfobs that you can always carry with you, or special buttons located in selected places.



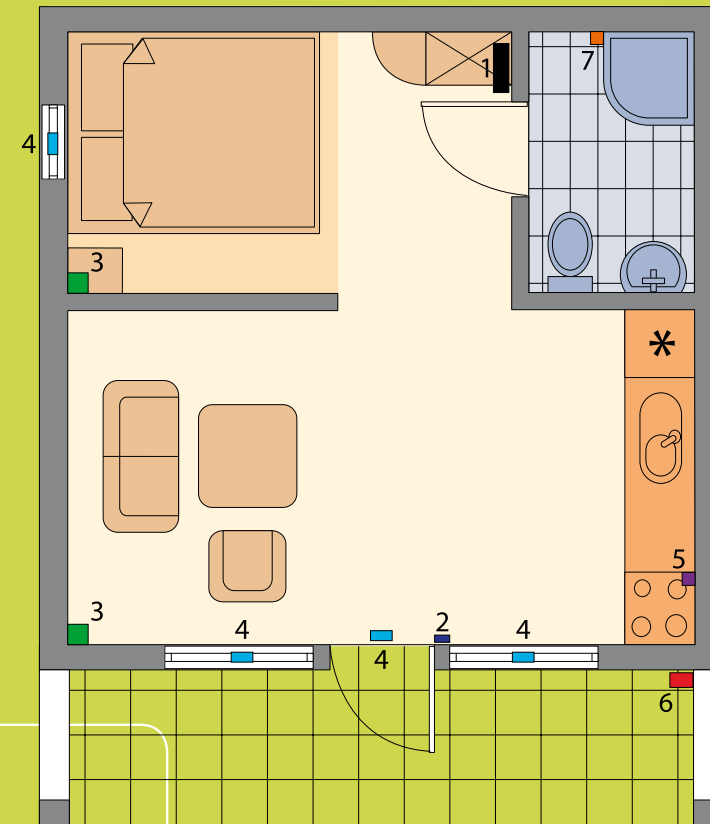
safe way of living
Safe way of living

example **setups****Wireless alarm system for a cottage**

Protection for a holiday cottage is based on the MICRA alarm module. The basic functions of intrusion detection can be implemented with wireless sensors which makes the installation as easy and quick as possible. You can extend functionality of the system by adding some wired detectors, for example, the flood detector. With the built-in GSM/GPRS communicator, just insert the SIM card into the MICRA module to be able to use the SMS notification of events.

**Example configuration**

1. **MICRA** alarm module
 2. **MKP-300** wireless keypad
 3. **MPD-300** motion detector
 4. **MMD-300** magnetic contact
 5. **MSD-300** smoke and heat alarm
 6. **SP-4003** outdoor siren
- Remote control keyfob **MPT-300**
optionally:
 7. **MFD-300** flood detector

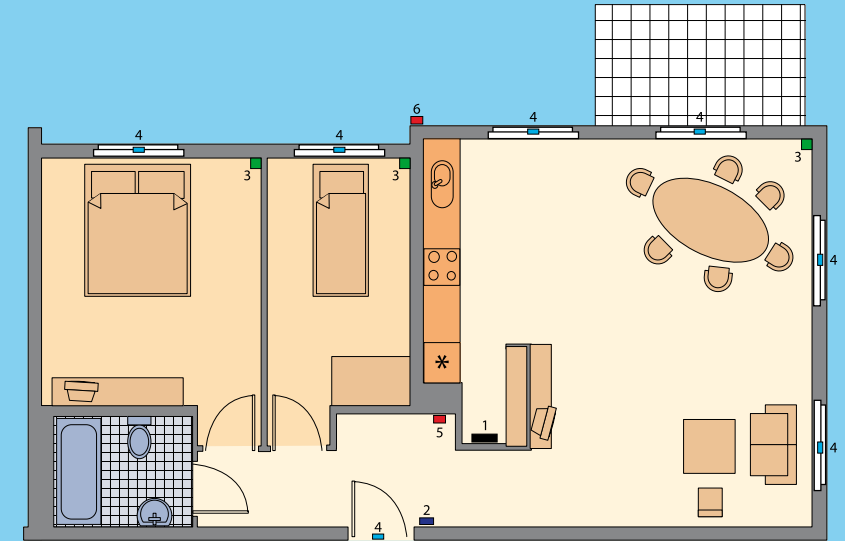


Alarm system for a three-room apartment

A security alarm system based on the control panel VERSA 10, which is ideal for apartments and small houses. It offers the possibility to extend the system in the future. It allows monitoring / communication with the security firm and direct notification of the owner, by phone (voice messaging) and SMS. It provides security and peace for the users. Its indisputable advantage is simple and easy operation, and an extra edge – the possibility of using wireless devices.

**Example configuration**

1. **VERSA 10** control panel
2. **VERSA-LCDM-WH** keypad
3. **AQUA Plus** motion detector
4. **K-1** magnetic contact
5. **SPW-220 R** indoor siren
6. **SP-4003 R** outdoor siren



Alarm system for a small single-family house

A security alarm system based on the INTEGRA 64 control panel. Having 16 zones and 16 optionally configurable outputs, the control panel ensures high security level for middle-size buildings, while the GSM LT-1 messaging module allows reliable communication in any circumstances. In addition, its extensive scalability and advanced functionality allow you to use it for building a home automation system.

Example configuration

1. **INTEGRA 64** control panel
2. **INT-KSG-SSW** keypad
- 2a. **INT-SF** partition keypad
3. **GRAPHITE** motion detector
4. **SILVER** dual technology motion detector
5. **K-1** magnetic contact
6. **SPW-220 R** indoor siren
7. **SP-4003 R** outdoor siren
8. **GSM LT-1** communicator



Alarm system for a large single-family house

A security alarm system based on the INTEGRA 128-WRL control panel. Versatility of the devices makes it possible not only to use them in the burglary and panic alarm systems, but also in the building access control and smart management systems. The main advantage of the above control panel is the freedom to use both hardwired and wireless devices. The built-in GSM/GPRS communicator ensures reliable communication in any circumstances, while the additional ETHM-1 Plus module enables the system control to be effected via the Internet or by using a mobile phone.

Example configuration

1. **INTEGRA 128-WRL** control panel
2. **INT-TSI / INT-TSG** keypad
- 2a. **INT-SF** partition keypad
3. **APD-100** motion detector
4. **AFD-100** flood detector
5. **SILVER** dual technology motion detector
6. **DG-1 TCM** narcotic gas detector
7. **AMD-101** wireless dual channel magnetic contact
8. **S-4** magnetic contact
9. **SPW-220 R** indoor siren
10. **SP-4003 R** outdoor siren
- optionally:**
11. **ETHM-1 Plus** TCP/IP communicator

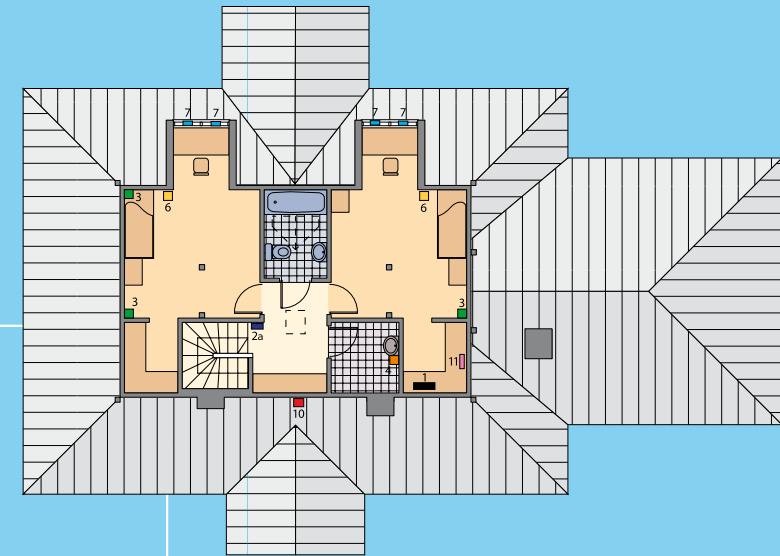
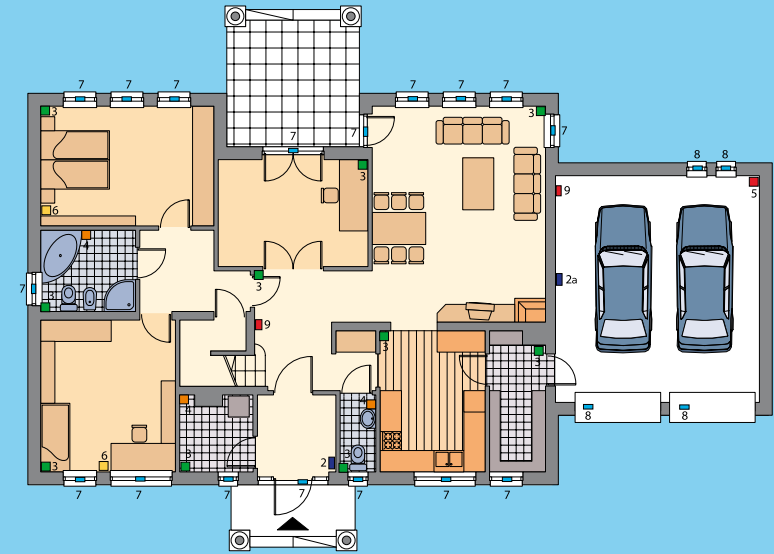


Table of contents

about SATEL

State of the art and top quality of SATEL's products
To make life easier

meet our products

02	Alarm control panels
04	Standard keypads
06	Keypads to control the home alarm and automation systems
08	Unlimited capabilities to control the intelligent alarm system
12	Sirens
14	Passive infrared motion detectors (PIR)
16	Dual technology motion detectors
18	Detectors – perimeter protection
20	Detectors – additional protection
22	Protection for small buildings

meet our solutions

24	Communication and messaging
26	SATEL mobile applications – full control over your system – wherever you are...
28	Day and night protection
30	Lighting control
32	Heating and air conditioning control
34	Automatic garden watering, roller shutter and garage gate control
36	Remote control of the system
38	Child-friendly home
40	Addressing the needs of the elderly

example setups

42	Wireless alarm system for a cottage
44	Alarm system for a three-room apartment
46	Alarm system for a small single-family house
48	Alarm system for a large single-family house

safe way of living
safe way of living



