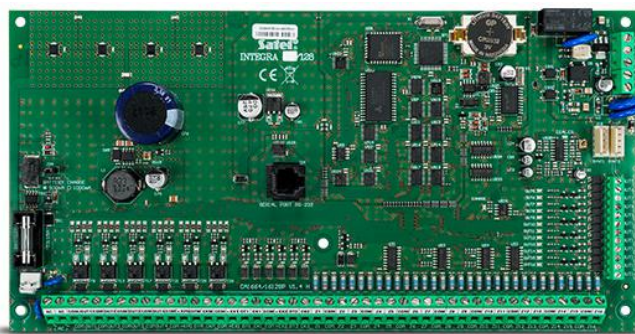


# INTEGRA 128

## ADVANCED CONTROL PANEL WITH 16 UP TO 128 ZONES

Advanced alarm control units providing alarm functions and optional implementation of home automation and access control systems. With a broad range of extension modules, their applications can be adapted to individual needs: from minor systems to extensive installations. Communication features combined with additional modules, such as GSM and TCP/IP, are a major advantage of the **INTEGRA** control units.

- 16 up to 128 zones
- 32 partitions, 8 objects
- 16 up to 128 programmable outputs
- keypads and expansion modules buses
- built-in telephone dialer with monitoring, voice messaging and remote control features
- access control and home automation features
- system operation with LCD keypads, partition keypads, keyfobs and proximity cards or remotely with mobile phone or PC
- 64 independent timers for automatic control
- event log with 22,527 entries and event printing feature
- 240+8+1 users
- RS-232 port – RJ type socket
- flash firmware upgrade with a PC
- built-in 3 A switching mode backup power supply with battery charging and diagnostic features
- option of not reporting possible problems with connecting to the SATEL server as a failure



### TECHNICAL DATA

Environmental class	II
Control panels	13,8 V DC
Low current programmable outputs rating	50 mA
High current programmable outputs rating	3000 mA
Power supply rating	3 A
Board dimensions	264 x 134 mm
Operating temperature range	-10...+55 °C
Main board supply voltage (±15%)	20 V AC, 50-60 Hz
Standby mode current consumption	149 mA
Max. current consumption	337 mA